

vtech®

# Parent's Guide

**Go! Go!**  
**CORY**  
**CARSON™**

## Freddie's Firehouse™

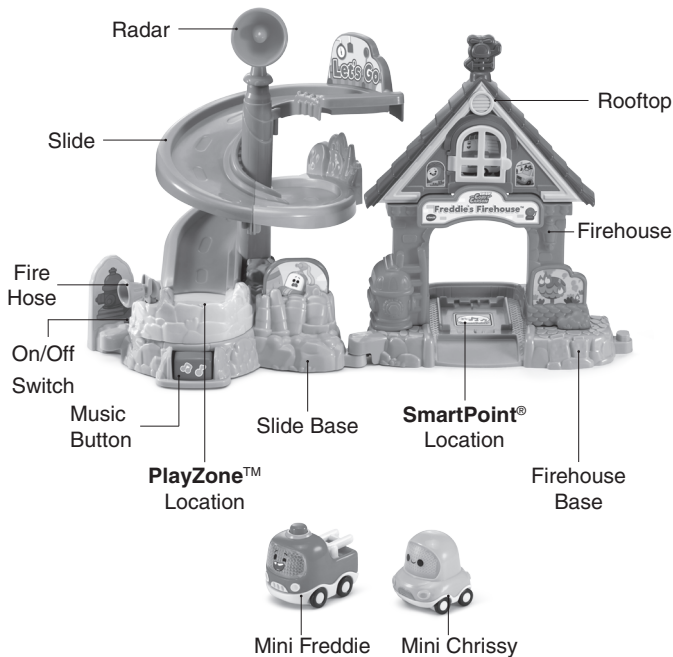


91-003801-000 ©

# INTRODUCTION

Thank you for purchasing the **Go! Go! Cory Carson™ Freddie's Firehouse™!**

Join Freddie Firetruck and Chrissy Carson for a special tour of the firehouse. Oh no, there's an emergency! Slide down the spiral slide to safety, help Freddie and Chrissy put out the fire.



## INCLUDED IN THIS PACKAGE

**NOTE:** This toy is not intended for teething.



One slide base



One firehouse base



One top slide



One bottom slide



One radar



One firehouse



One rooftop



One mini Freddie



One mini Chrissy

- One label sheet
- One Parent's Guide

**WARNING:**

All packing materials such as tape, plastic sheets, packaging locks, removable tags, cable ties, cords and packaging screws are not part of this toy, and should be discarded for your child's safety.

**NOTE:**

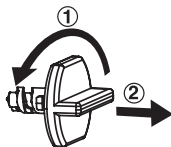
Please keep this parent's guide as it contains important information.

**ATTENTION :**

Pour la sécurité de votre enfant, débarrassez-vous de tous les produits d'emballage tels que rubans adhésifs, feuilles de plastique, attaches, étiquettes et vis d'emballage. Ils ne font pas partie du jouet.

**NOTE :**

Il est conseillé de conserver ce guide des parents car il comporte des informations importantes.

**Unlock the Packaging Locks**

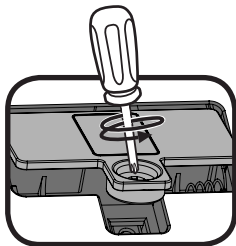
① Turn the packaging lock counterclockwise several times.

② Pull out the packaging lock and discard.

# GETTING STARTED

## Battery Removal and Installation Firehouse

1. Make sure the unit is turned **OFF**.
2. Locate the battery cover on the bottom of the slide base, use a coin or a screwdriver to loosen the screw and open the battery cover.
3. Remove old batteries by pulling up on one end of each battery.
4. Install 2 new AAA (AM-4/LR03) batteries following the diagram inside the battery box. (The use of new alkaline batteries is recommended for maximum performance.)
5. Replace the battery cover and tighten the screw to secure.

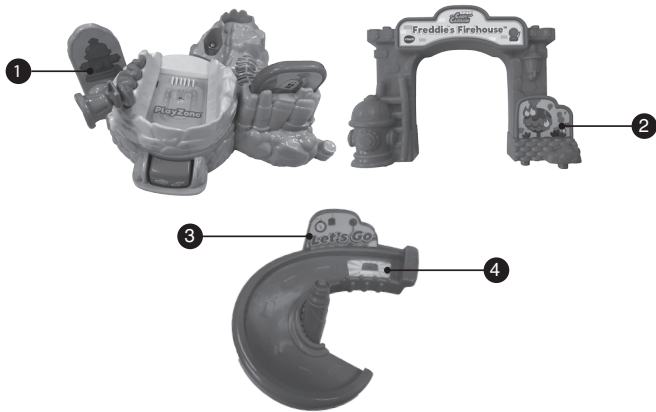


## BATTERY NOTICE

- Use new alkaline batteries for maximum performance.
- Use only batteries of the same or equivalent type as recommended.
- Do not mix different types of batteries: alkaline, standard (carbon-zinc), rechargeable, or new and used batteries.
- Do not use damaged batteries.
- Insert batteries with the correct polarity.
- Do not short-circuit the battery terminals.
- Remove exhausted batteries from the toy.
- Remove batteries during long periods of non-use.
- Do not dispose of batteries in fire.
- Do not charge non-rechargeable batteries.
- Remove rechargeable batteries from the toy before charging (if removable).
- Rechargeable batteries are only to be charged under adult supervision.

# LABEL APPLICATION

Please apply the labels to the playset as shown below:



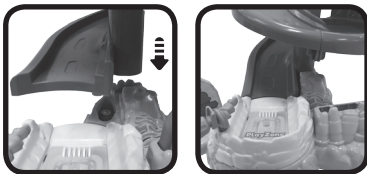
# ASSEMBLY INSTRUCTIONS

With the **Go! Go! Cory Carson™ Freddie's Firehouse™**, safety comes first. To ensure your child's safety, adult assembly is required.

1. Insert the **Top Slide** into the **Bottom Slide**. Press until you hear a "click" to indicate it is secure. Once the slides are connected, they cannot be taken apart.



2. Attach the **Bottom Slide** to the **Slide Base**. Press down until you hear a "click" to indicate it is secure. Once the tracks are connected they cannot be taken apart.



3. Insert the **Radar** into the **Top Slide**. Press firmly to ensure it is connected as shown below.



4. Attach the **Rooftop** to the **Firehouse** as shown below. You will hear a "click" to indicate it is secure.



5. Press the **Firehouse** into the **Firehouse Base** until you hear a "click" to indicate it is secure.





6. Connect the **Firehouse Base** to the **Slide Base** as shown below. You will hear a “click” to indicate it is secure.



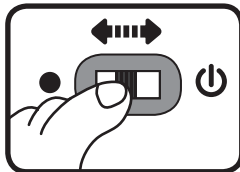
## PRODUCT FEATURES

### 1. On/Off Switch

To turn **Freddie's Firehouse™ ON**, slide the **On/Off Switch** to the **ON** ⏻ position. To turn **Freddie's Firehouse™ OFF**, slide the **On/Off Switch** to the **OFF** ● position.

### 2. Automatic Shut-Off

To preserve battery life, **Freddie's Firehouse™** will automatically power down after approximately 60 seconds without input. The unit can only be turned on again by pressing the **Music Button**, turning the **Fire Hose** or triggering the **PlayZone™ Location** with a mini vehicle.



### NOTE:

If the unit powers down while playing, please install a new set of batteries.

## ACTIVITIES

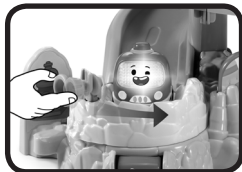
### 1. **PlayZone™ Location**

Place **Mini Freddie**, **Mini Chrissy** or other **Go! Go! Cory Carson®** mini characters (sold separately) on the **Playzone™** to trigger sounds, short tunes and phrases.



### 2. **Fire Hose**

When a mini character is on the **PlayZone™**, turn the **Fire Hose** to hear music, sounds and phrases from the show. The light will flash with the sounds. When there is no mini character, you will hear water sounds and phrases.



### 3. **Music Button**

When there is no mini character on the **PlayZone™**, press the **Music Button** to hear songs, melodies and phrases. When **Mini Freddie**, **Mini Chrissy** or other **Go! Go! Cory Carson®** mini characters (sold separately) are on the **Playzone™**, press the **Music Button** to hear sounds and phrases related to each character. The light will flash with the sounds.



### 3. **SmartPoint® Location**

Place a **SmartPoint®** character (sold separately) on the **SmartPoint®** in the **Firehouse** to hear fun phrases and sound effects.



## SONG LYRICS

1. When the station siren rings,  
we're ready for the call.
2. Safety first is what we say.  
Fighting fire both night and day.
3. We're here to save the day!

## MELODY LIST

1. Farmer in the Dell
2. Froggie Went a Courtin'
3. The Green Grass Grew All Around
4. Here We Go 'Round the Mulberry Bush
5. Home on the Range
6. Jack and Jill

## CARE & MAINTENANCE

1. Keep the unit clean by wiping it with a slightly damp cloth.
2. Keep the unit out of direct sunlight and away from any direct heat source.
3. Remove the batteries when the unit will not be in use for an extended period of time.
4. Do not drop the unit on hard surfaces and do not expose the unit to moisture or water.

# TROUBLESHOOTING

If for some reason the unit stops working or malfunctions, please follow these steps:

1. Turn the unit **OFF**.
2. Interrupt the power supply by removing the batteries.
3. Let the unit stand for a few minutes, then replace the batteries.
4. Turn the unit **ON**. The unit should now be ready to play again.
5. If the unit still does not work, install a new set of batteries.

If the problem persists, please call our Consumer Services Department at 1-800-521-2010 in the U.S. or 1-877-352-8697 in Canada, or by going to our website at [vtechkids.com](http://vtechkids.com) and filling out our Contact Us form located under the Customer Support link. A service representative will be happy to help you.

## IMPORTANT NOTE:

Creating and developing **VTech®** products is accompanied by a responsibility that we at **VTech®** take very seriously. We make every effort to ensure the accuracy of the information, which forms the value of our products. However, errors sometimes can occur. It is important for you to know that we stand behind our products and encourage you to call our Consumer Services Department at 1-800-521-2010 in the U.S. or 1-877-352-8697 in Canada, or by going to our website at [vtechkids.com](http://vtechkids.com) and filling out our Contact Us form located under the Customer Support link with any problems and/or suggestions that you might have. A service representative will be happy to help you.

## NOTE

This equipment has been tested and found to comply with the limits for a Class B digital device, pursuant to Part 15 of the FCC Rules. These limits are designed to provide reasonable protection against harmful interference in a residential installation. This equipment generates, uses and can radiate radio frequency energy and, if not installed and used in accordance with the instructions, may cause

harmful interference to radio communications. However, there is no guarantee that interference will not occur in a particular installation. If this equipment does cause harmful interference to radio or television reception, which can be determined by turning the equipment off and on, the user is encouraged to try to correct the interference by one or more of the following measures:

- Reorient or relocate the receiving antenna.
- Increase the separation between the equipment and receiver.
- Connect the equipment into an outlet on a circuit different from that to which the receiver is connected.
- Consult the dealer or an experienced radio/TV technician for help.

Caution: Changes or modifications not expressly approved by the party responsible for compliance could void the user's authority to operate the equipment.

### Supplier's Declaration of Conformity

Trade Name: VTech®  
Model: 5240  
Product Name: Go! Go! Cory Carson™ Freddie's Firehouse™  
Responsible Party: VTech Electronics North America, LLC  
Address: 1156 W. Shure Drive, Suite 200,  
Arlington Heights, IL 60004  
Website: vtechkids.com

THIS DEVICE COMPLIES WITH PART 15 OF THE FCC RULES. OPERATION IS SUBJECT TO THE FOLLOWING TWO CONDITIONS:  
(1) THIS DEVICE MAY NOT CAUSE HARMFUL INTERFERENCE, AND  
(2) THIS DEVICE MUST ACCEPT ANY INTERFERENCE RECEIVED, INCLUDING INTERFERENCE THAT MAY CAUSE UNDESIRE OPERATION.

***CAN ICES-3 (B)/NMB-3(B)***



**Visit our website for more  
information about our products,  
downloads, resources and more.**

***vtechkids.com***

Read our complete warranty policy online at  
*vtechkids.com/warranty*



TM & © 2020 VTech Holdings Limited.  
All rights reserved.  
**Printed in China.**  
91-003801-000 